

STROKE is an EMERGENCY!!

GET HELP **F-A-S-T**

Facial Droop = *Ask the person to smile*

Normal: Both sides of face move equally

Abnormal: One side of face does not move at all



Arm Drift = *Ask the person to raise both arms*

Normal: Both arms move equally or not at all

Abnormal: One arm drifts compared to the other

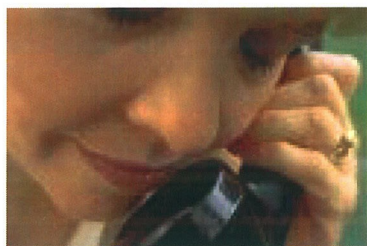
Speech = *Ask the person to speak a simple sentence*

Normal: Uses correct words with no slurring

Abnormal: Slurred or inappropriate words or mute

Time = *To call 911 (in hospital call 333)*

Time is crucial. Call immediately!



call 911 for help.

In hospital CALL 333